

K4 SERIES

HMK 62 SS & HMK 62 T



HIDROMEK





The Newest and the Best Solution for Your Business!

K4 Series mini backhoe loaders, designed and manufactured by combining HIDROMEK's experience in the backhoe loader product group with its newly developed technologies, offer all the capabilities of both a mini loader and a mini excavator in a single machine.

HMK 62 SS with wheels and HMK 62 T with tracks deliver optimal performance according to working conditions. With their compact dimensions, HIDROMEK mini backhoe loaders offer operators an easy and practical working experience in narrow spaces, urban projects, and agricultural applications.



red*dot* winner 2023



62T



HIDROMEK



Superior Performance in Compact Dimensions!

K4 Series mini backhoe loaders deliver unmatched loading and digging performance in confined worksites, off-road terrain, and agricultural fields thanks to their compact size, ability to rotate 360 degrees on a single point around their own axis, comfortable usability, and capability to work easily with various attachments.

HMK 62 SS and HMK 62 T mini backhoe loaders increase productivity in many operations with their superior traction, high maneuverability, and top-level loading and digging efficiency. The banana boom geometry, which facilitates loading, and the increased user comfort and ease of use with K4 Series provide operators with efficient and enjoyable working hours.

Durable Structure

HIDROMEK's mini backhoe loaders, manufactured with high technology in modern production facilities and undergoing precise quality control stages, are produced with a focus on maximum performance, long life, and trouble-free operation in challenging field conditions.





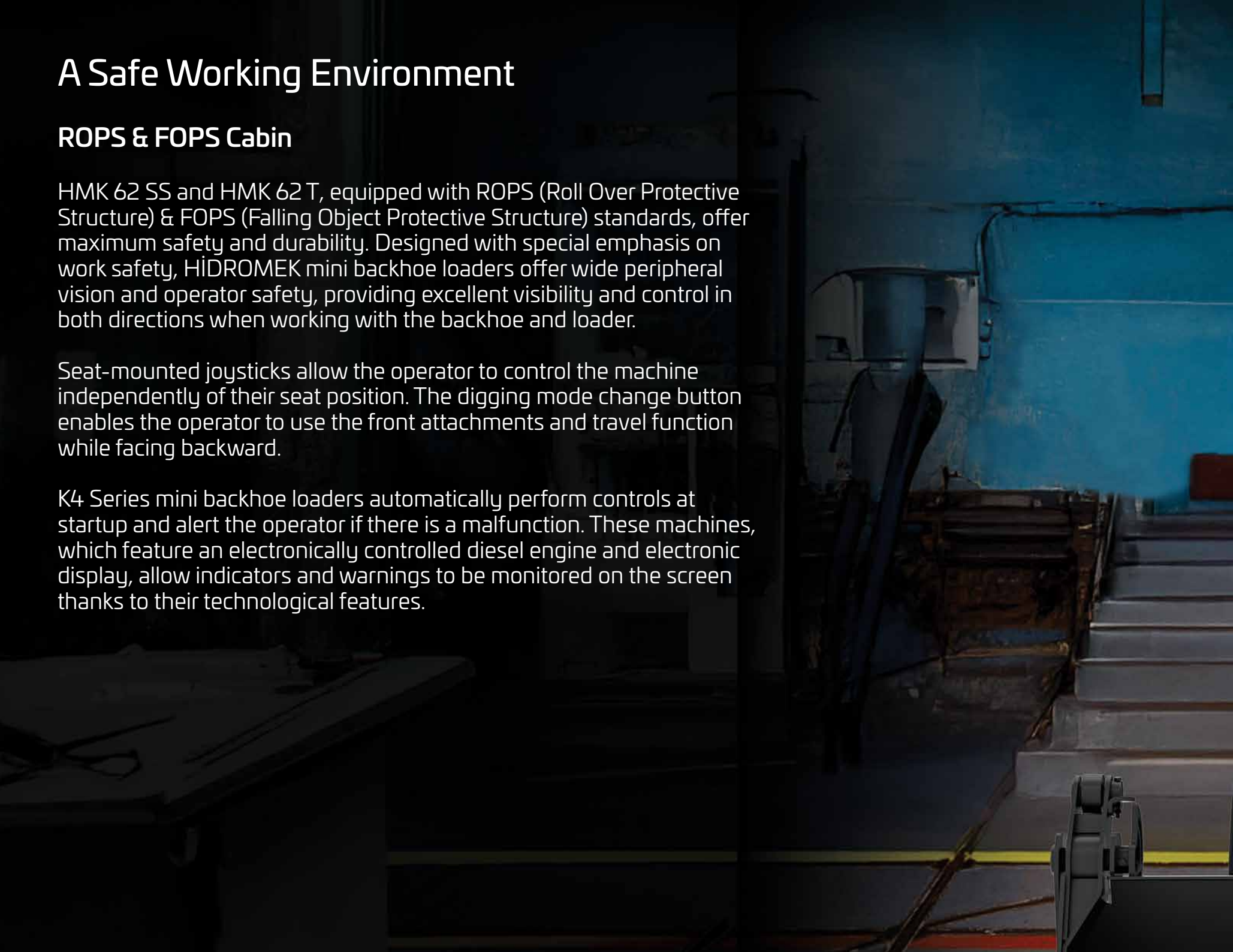
A Safe Working Environment

ROPS & FOPS Cabin

HMK 62 SS and HMK 62 T, equipped with ROPS (Roll Over Protective Structure) & FOPS (Falling Object Protective Structure) standards, offer maximum safety and durability. Designed with special emphasis on work safety, HİDROMEK mini backhoe loaders offer wide peripheral vision and operator safety, providing excellent visibility and control in both directions when working with the backhoe and loader.

Seat-mounted joysticks allow the operator to control the machine independently of their seat position. The digging mode change button enables the operator to use the front attachments and travel function while facing backward.

K4 Series mini backhoe loaders automatically perform controls at startup and alert the operator if there is a malfunction. These machines, which feature an electronically controlled diesel engine and electronic display, allow indicators and warnings to be monitored on the screen thanks to their technological features.





Versatile and comfortable usage

HIDROMEK mini backhoe loaders, which feature all the technology necessary for superior performance, ease of use, operator safety, and long-term trouble-free operation, offer the ability to work on many different works with their versatile use in the field.

With the transition to K4 series, HIDROMEK mini backhoe loaders enhance operator comfort in the field with their expanded cabins and control panels featuring a more modern design language.

In the mini backhoe loaders with increased windshield height and a wide field of view in the new design, the seat rotation range is extended inside the cab to provide user comfort.





HYDROPOWER

Aesthetic design of power

- Ergonomic operator seat
- Automatic air conditioning system
- Openable back window
- Openable side windows
- FOPS and ROPS certified cabin
- Radio and audio system
- Control with ergonomic joysticks integrated into the seat
- Interior light
- 12V power socket
- Personal storage spaces
- LCD display panel



Office comfort in construction equipment

K4 Series mini backhoe loaders enable the operator to work ergonomically, safely, and easily thanks to their equipment and features. Air conditioning systems tested in extreme cold operate with superior performance even at -20 degrees.

It provides the operator with a pleasant working environment even in the harshest climatic conditions.



Big Solutions for Small Spaces!



Quick maintenance and service convenience with safe and easy access

HİDROMEK mini backhoe loaders, redesigned with the K4 Series design language, offer maximum accessibility to relevant areas for the fastest possible maintenance and service. Features such as easy opening of the front hood and shutter sections, a service point where hydraulic system pressures are measured, easy access to control points with a common key, and the presence of a toolbox enable K4 Series mini backhoe loaders to offer easy service and maintenance, thereby increasing the machine's uptime.

Extensive and fast HİDROMEK service network

HİDROMEK, with nearly 60 service points in Türkiye and over 100 abroad, makes your work easier with its high spare parts availability rate and 99% spare parts availability in after-sales services.



ENGINE

Brand	KUBOTA
Type	V2403-CR-T-EW03 Diesel Engine
Number of Cylinders	4 in line
Maximum Power	65.2 HP (48.6 kW) @2700 rpm
Maximum Torque	198.5 Nm @1600 rpm
Displacement	2434 cc
Bore x Stroke	87 x 102,4 mm
Emission Class	EU: Stage V / US: Tier 4 final

High power and torque output, water cooled turbocharged diesel engine.

TIRES

Front / Rear	10 x 16,5 10 Pr Skz
--------------	---------------------

CONTROL SYSTEM

Comfortable use with joysticks integrated into the seat used for loading, digging and travelling.

DRIVE SYSTEM

- Variable displacement piston type hydraulic pump
- 4 wheel drive
- Max. 12 km/h travel speed
- Seat mounted joystick type control

HYDRAULIC SYSTEM

Attachment Pump	
Standard Flow Version	
Pump	Gear pump
Main Pump Flow	60 L/min @3000 rpm
Pressure	250 bar
High Flow Version (Optional):	
Pump	Gear pump
Main Pump Flow	120 L/min @3000 rpm
Pressure	160 bar

LOADER PERFORMANCE

Bucket capacity	0,35 m ³
Max. bucket breakout force	2883 kgf
Max. loading arm breakout force	2600 kgf
Hydraulic lifting capacity at maximum height	885 kg

BACKHOE PERFORMANCE

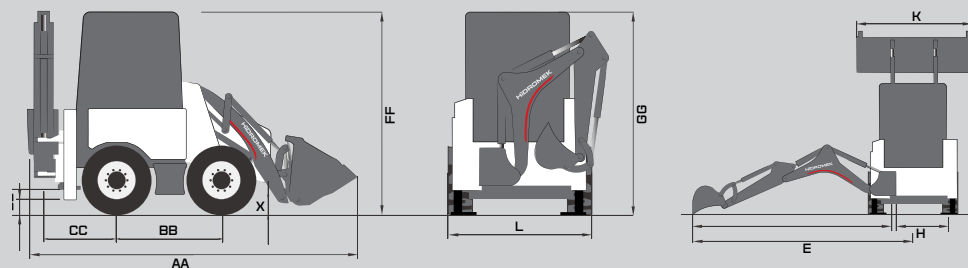
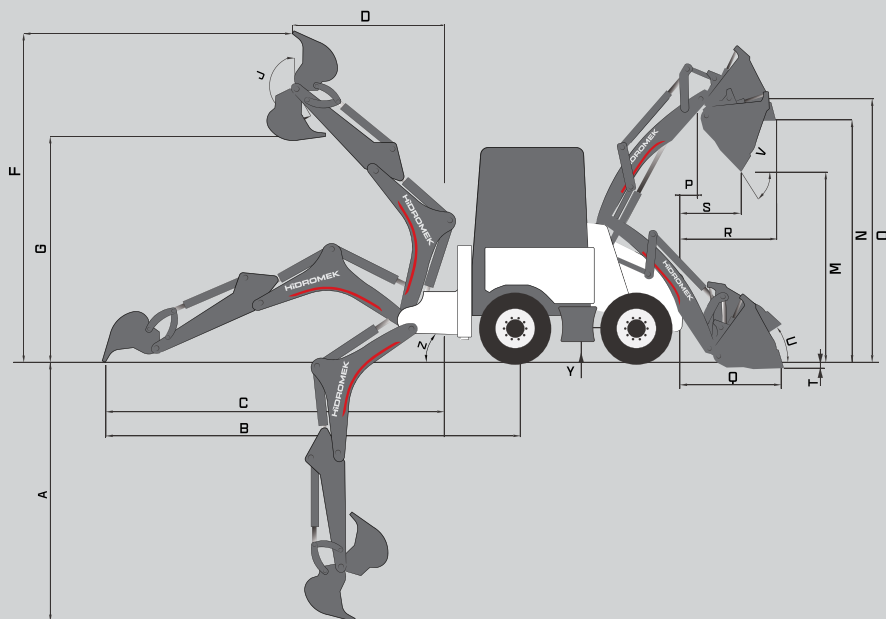
Bucket capacity	0,06 m ³
Max. bucket breakout force	1985 kgf
Max. dipper breakout force	1500 kgf
Hydraulic lifting capacity at maximum height	488 kg

FILLING CAPACITIES

Fuel Tank	50 L	Engine Cooling System	8,4 L
Hydraulic Tank	45 L	Engine Oil	9,5 L
Hydraulic System	70 L		

OPERATING WEIGHT (kg)

HMK 62 SS	3976 kg
-----------	---------



DIMENSIONS (mm)

	Standard Arm	Extendable Arm (retracted)	Extendable Arm (extended)	
A)	Max digging depth	2.751	2.764	3.264
B)	Ground level to rear wheel centre	4.419	4.432	4.918
C)	Ground level to slew centre	3.608	3.622	4.108
D)	At full height to slew centre	1.620	1.630	1.988
E)	To centre line of machine	3.986	4.000	4.486
F)	Operating height	3.472	3.482	3.850
G)	Maximum loadover height	2.400	2.410	2.778
H)	Total kingpost travel	756		
J)	Bucket rotation	204°		
K)	Shovel max. width	1.630		
M)	Dump height	2.022		
N)	Load over height	2.567		
O)	Loader hinge pin height	2.800		
P)	Pin forward reach	190		
Q)	Grab lug-bumper distance	1.085		
R)	Max. reach at full height	1.033		
S)	Reach at full height fully dumped	591		
T)	Dig depth	55		
U)	Roll back at ground	36°		
V)	Dump angle	47°		
Z)	Departure angle	24°		
AA)	Total travel length	3.720		
BB)	Axle centreline distance	1.214		
CC)	Slew centre to rear axle centre distance	803		
DD)	Stabiliser feet clearance	228		
EE)	Kingpost clearance	295		
GG)	Cab roof height	2.275		
HH)	Total travel clearance	2.308		
L)	Rear frame width	1.610		
X)	The distance between pin center and ground	182		
Z1)	Ramp angle	140°		
Z2)	Ramp angle	140°		

WARNING: HÍDROMEK reserves the right to change the values given in this catalogue and designs indicated without prior notification.

ENGINE

Brand & Model	KUBOTA V2403-CR-T-EW03
Type	Water-cooled, 4-stroke turbocharged diesel engine
Maximum Power	65,2 HP (48,6 kW) @2700 rpm
Maximum Torque	198,5 Nm @1600 rpm
Displacement	2434 cc
Bore x Stroke	87 mm x 102,4 mm
Emission Class	Stage V / EPA: Tier 4 Final

HYDRAULIC SYSTEM

Attachment Pump	
Standard Flow Version	
Pump	Gear pump
Main Pump Flow	60 L/min @3000 rpm
Pressure	250 bar
High Flow Version (Optional):	
Pump	Gear pump
Main Pump Flow	120 L/min @3000 rpm
Pressure	160 bar

CONTROL SYSTEM

Comfortable use with joysticks integrated into the seat used for loading, digging and travelling.

DRIVE SYSTEM

- Hydraulic system with variable displacement piston type pump
- Driving speed 0-7,5 km/h
- Max. Gradeability %57 (30°)
- Hydraulic Travel Pump

TRACKS

Track type	Rubber Track
Width	400 mm
Pitch	86
Number of Track	56

LOADER PERFORMANCE

Bucket capacity	0,45 m ³
Max. bucket breakout force	2883 kgf
Max. loading arm breakout force	2600 kgf
Hydraulic lifting capacity at maximum height	863 kg

BACKHOE PERFORMANCE

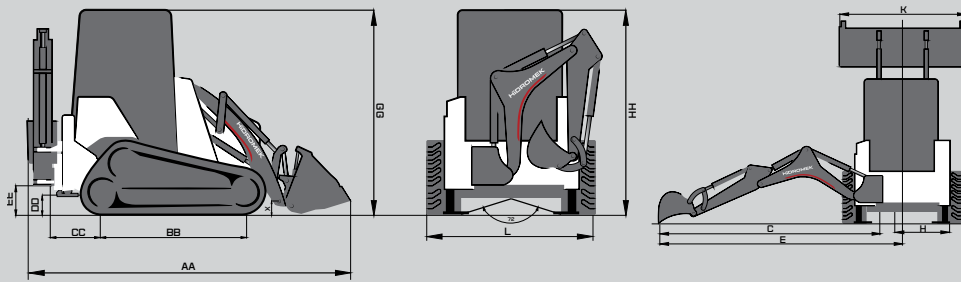
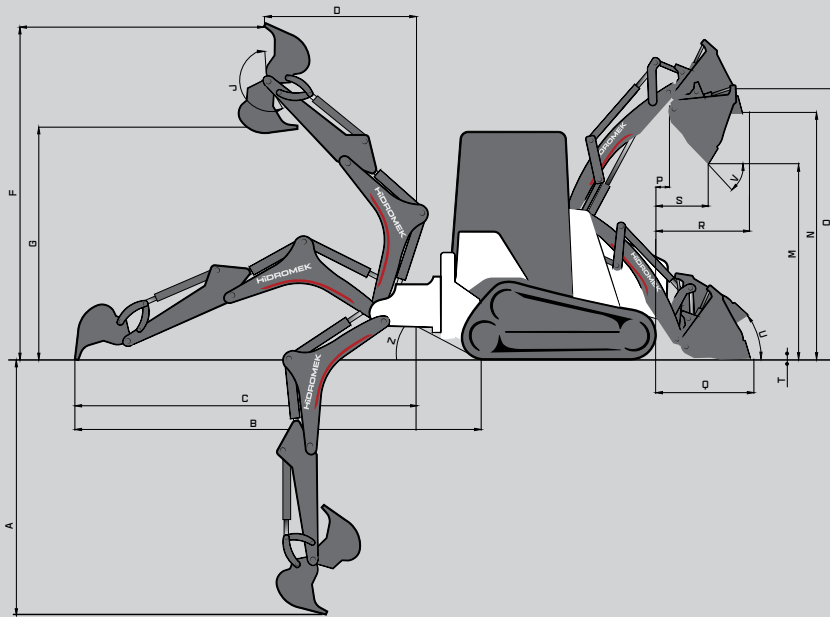
Bucket capacity	0,06 m ³
Max. bucket breakout force	1985 kgf
Max. dipper breakout force	1500 kgf
Hydraulic lifting capacity at maximum height	488 kg

FILLING CAPACITIES

Fuel Tank	50 L	Engine Cooling System	8,4 L
Hydraulic Tank	59 L	Engine Oil	9,5 L
Hydraulic System	78 L		

OPERATING WEIGHT (kg)

HMK 62 T	5.396 kg
----------	----------



DIMENSIONS (mm)

	Standard Arm	Extendable Arm (retracted)	Extendable Arm (extended)
A)	Max digging depth		
B)	Ground level to rear wheel centre		
C)	Ground level to slew centre		
D)	At full height to slew centre		
E)	To centre line of machine		
F)	Operating height		
G)	Maximum loadover height		
H)	Total kingpost travel		
J)	Bucket rotation		
K)	Shovel max. width		
M)	Dump height		
N)	Load over height		
O)	Loader hinge pin height		
P)	Pin forward reach		
Q)	Grab lug-bumper distance		
R)	Max. reach at full height		
S)	Reach at full height fully dumped		
T)	Dig depth		
U)	Roll back at ground		
V)	Dump angle		
Z)	Departure angle		
AA)	Total travel length		
BB)	Axle centreline distance		
CC)	Slew centre to rear axle centre distance		
DD)	Stabiliser feet clearance		
EE)	Kingpost clearance		
GG)	Cab roof height		
HH)	Total travel clearance		
L)	Rear frame width		
X)	The distance between pin center and ground		
Z2)	Ramp angle		

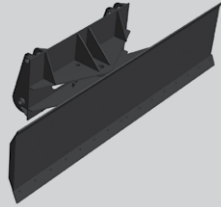
WARNING: HÍDROMEK reserves the right to change the values given in this catalogue and designs indicated without prior notification.

HMK 62 SS K4

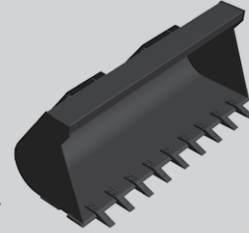
ATTACHMENTS



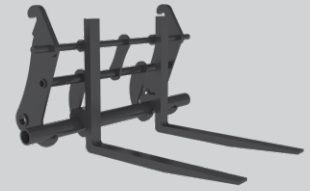
Hydraulic Breaker



Dozer Blades



Standard Bucket



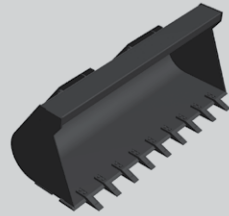
Forks Mounted on Quick Coupler

HMK 62 T K4

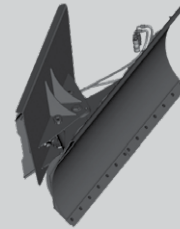
ATTACHMENTS



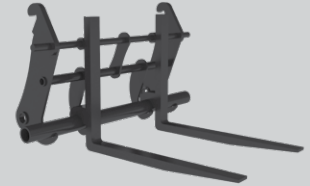
Hydraulic Breaker



Standard Bucket



Levelling Blade



Forks Mounted on Quick Coupler

Engine	HMK 62 SS	HMK 62 T
Water cooled diesel engine with turbocharger	●	●
Two-stage air filter	●	●
Air filter clogged indicator	●	●
Low engine pressure warning system	●	●
Overheat warning system	●	●
Electronical engine control	●	●
Auto idle	0	0
Fuel Shut-off Valve	0	X
Fuel Transfer Pump	0	X

Hydraulic System	HMK 62 SS	HMK 62 T
Main hydraulic filter	●	●
Backup ports (valve)	●	●
Hose burst valve	●	●
Single-acting hydraulic line, breaker	●	●
High flow	0	0
Double acting backhoe line	0	0
Biodegradable Hydraulic Oil Group	0	0

Operator's Cab	HMK 62 SS	HMK 62 T
Pressurized and sound isolated cabin	●	●
Air-conditioning	●	●
Opera control system	●	●
Sliding rear window, opening side windows	●	●
Windshield wiper	●	●
Joysticks and pedals	●	●
Front windshield	●	●
Electric horn	●	●
Intrerior light	●	●
Easy-cleaned floor	●	●
12V power socket	●	●
Bluetooth Radio and Sound System	●	●

Security	HMK 62 SS	HMK 62 T
ROPS (Roll Over Protective Structure)	●	●
FOPS (Falling Object Protective Structure)	●	●
Right and left rear view mirrors	●	●
Working lamps	●	●
Emergency engine stop switch	●	●
Battery cut-off switch	●	●
Handrails by the steps and on the upper frame	●	●
Lockable fuel tank cover	●	●
Stabilizer Rubber Pad	0	0

Miscellaneous	HMK 62 SS	HMK 62 T
Water sensor on fuel pre-filter	●	●
Alternator (12 V, 60 A) - Battery (1 X 12 V, 100 Ah)	●	●
Battery Charge Indicator	●	●

● STANDARD 0 OPTIONAL X NOT AVAILABLE

HİDROMEK®

HEAD OFFICE

Address : Ahi Evran OSB Mahallesi,
Osmanlı Caddesi, No:1, 06935
Sincan-ANKARA/TÜRKİYE

Phone : +90 312 267 12 60

Fax : +90 312 267 12 39

E-mail: export@hidromek.com.tr

AFTER SALES SERVICE

Address : İstanbul Yolu 17. Km,
Şehit Osman Avcı Mahallesi,
No: 479, Etimesgut-ANKARA/TÜRKİYE

Phone : +90 312 280 87 40

Fax : +90 312 280 87 48

HİDROMEK® WEST

HIDROMEK MAQUINARIA DE CONSTRUCCION ESPAÑA S.L.

Address : Avenida del Progrés, 7, 08840 –
Viladecans Barcelona/ SPAIN

Phone : +34 93 638 84 65

E-mail : info@hidromek.es

HİDROMEK® HCE

HİDROMEK Construction Equipment (Thailand) Ltd.

Address : Amata City Chonburi Industrial Estate Phase 7,
No. 700/669 Moo 1, T.Phanthong,
A.Phanthong, Chonburi 20160, TAYLAND

Phone : +66 38 447 349

Fax : +66 38 447 355

HİDROMEK® JAPAN

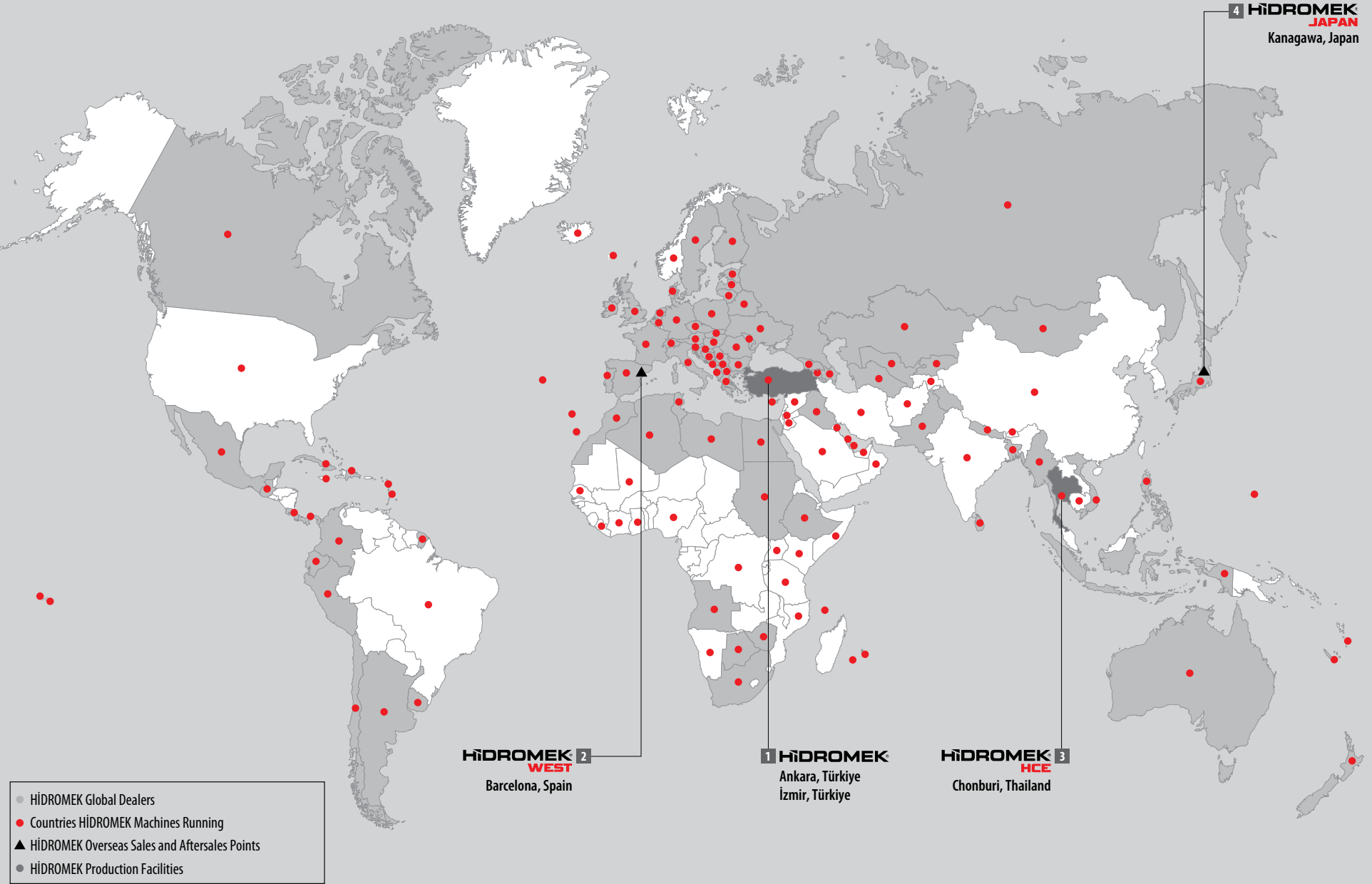
Address : 5-10, Hashimoto 6-chome,
Midori-Ku, Sagamihara,
Kanagawa, 252-0143 JAPAN

Phone : +81 42 703 0261

Fax : +81 42 703 0262

E-mail : Kiyoko.Shinoda@hidromek.com

HİDROMEK AROUND THE WORLD



HIDROMEK®

Together Stronger

www.hidromek.com

 [hidromek.tr](https://www.facebook.com/hidromek.tr)  [Hidromek](https://twitter.com/Hidromek)  [hidromekofficial](https://www.instagram.com/hidromekofficial)  [HidromekTv](https://www.youtube.com/HidromekTv)  [company/hidromek](https://www.linkedin.com/company/hidromek)  [hidromek.official](https://www.tiktok.com/hidromek.official)

ENG - FEBRUARY 2026 / 240226 - V

